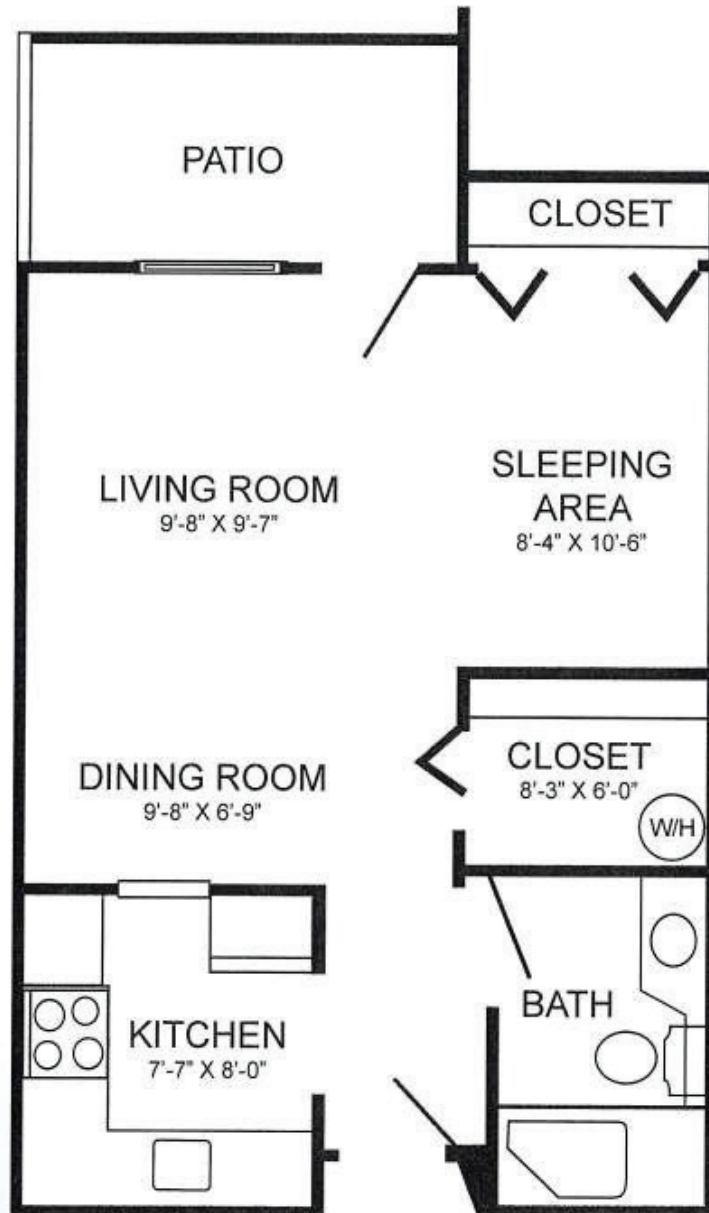


# Hillside

493 Sq. Ft., Studio, Patio/Balcony, Walk-in Closet



*Dimensions are approximate.*

 **COVENANT  
VILLAGE OF CROMWELL**  
*A Covenant Retirement Community*

52 Missionary Road | Cromwell, CT 06416

*Covenant Retirement Communities is a ministry of the Evangelical Covenant Church.*

860-754-3039

[www.CovenantVillageofCromwell.org](http://www.CovenantVillageofCromwell.org)



*Covenant Retirement Communities does not discriminate pursuant to the federal Fair Housing Act.*